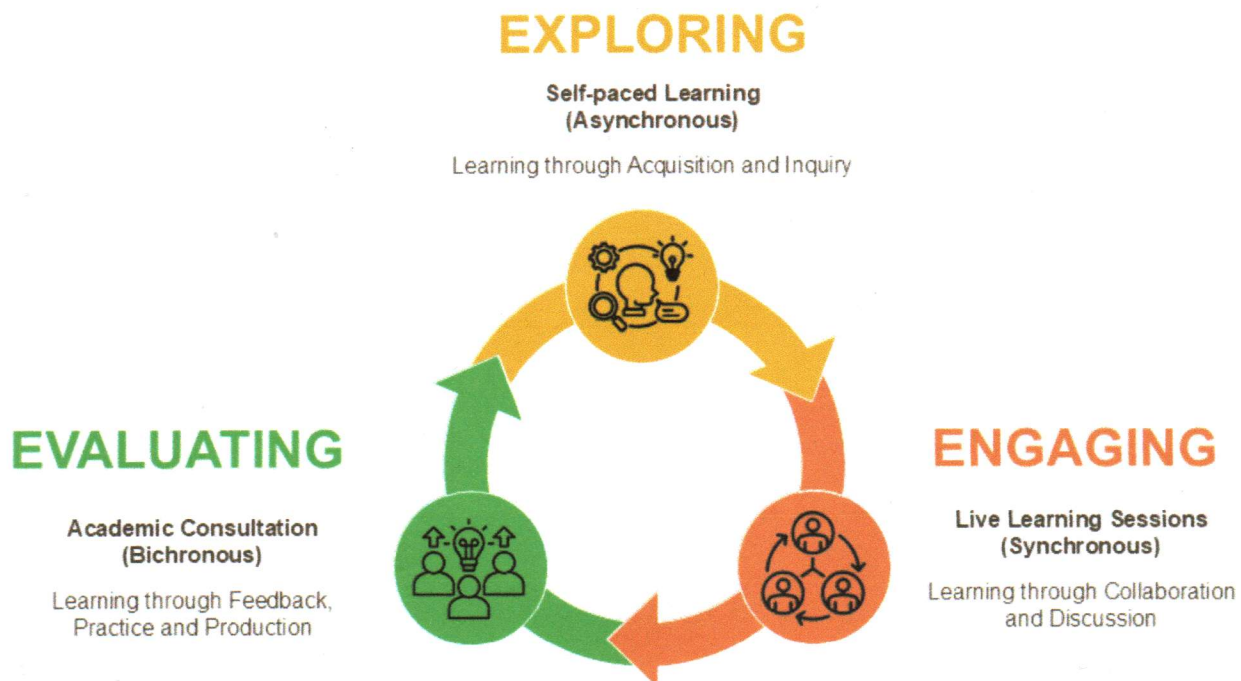


Magis-360

Ateneo de Zamboanga University General Blended Learning Framework

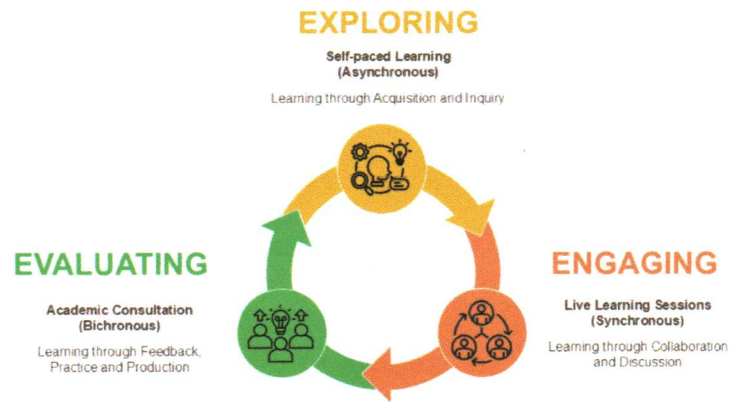
I. Introduction

The Magis-360: Ateneo de Zamboanga University General Blended Learning Framework is the official instructional delivery model of the university. It is based on the Six Learning Blocks developed by Professor Diana Laurillard. It is also patterned after the General Instructional Delivery Framework that AdZU utilized during the Covid-19 pandemic period, which comprises Self-paced Learning (Asynchronous), Online Learning Sessions (Synchronous), and Academic Consultations (Bichronous). This framework is designed to be emergency-proof, ensuring learning continuity even during unexpected events.

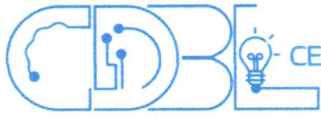


II. Framework Structure

The learning experience in Magis-360 is designed to be delivered into three approaches:



1. **Exploring (Self-paced Learning):** In this approach, learners will have the opportunity to learn independently. Learners will be provided with learning materials such as pre-recorded lectures, readings, study sessions, massive open online courses (MOOCs), and other self-guided materials through their Learning Management System. This aligns with the Self-paced Learning (Asynchronous) component, allowing students to digest information at their own pace. This highlights students' learning through acquisition and inquiry.
2. **Engaging (Live Learning Session):** This phase focuses on interactive learning experiences. It will primarily involve synchronous learning sessions where students can participate in live discussions, group activities, and direct interaction with instructors and peers. This approach emphasizes learning through collaboration and discussion, as well as the Live Learning Sessions (Synchronous) component of the General Blended Learning framework. This can be delivered either in virtual, face-to-face, or hybrid sessions.
3. **Evaluating (Academic Consultation):** This approach emphasizes a deeper understanding, the application of knowledge, and the demonstration of mastery. This can include activities such as project-based learning, presentations, and assessments. This highlights students' learning through practice, production, and receiving essential feedback, addressing specific challenges, and guiding learners to achieve the intended learning outcomes during Academic consultations (Bichronous). These consultations can be done through live meeting sessions, email, or other applicable communication methods, whichever is most suitable for the situation.



III. Key Benefits

The following are the key benefits of Magis-360:

1. **Emergency-Proof Teaching Design:** Following this framework provides AdZU with an emergency-proof teaching design. This ensures that learning continues seamlessly even when unexpected events arise—such as natural disasters, health issues, family emergencies, transportation disruptions, or when students are called to represent the school in competitions and other official activities. Through carefully prepared learning materials posted in the LMS, students remain connected to their lessons despite these interruptions.
2. **Enhanced Home-School Partnership:** In addition, Magis-360 helps strengthen the partnership between school and home by keeping parents and guardians informed about what's happening in class through their child's Learning Management System. They can stay updated on lesson content, activities, and student progress, allowing them to better support their child's learning journey at home.

IV. Faculty Development

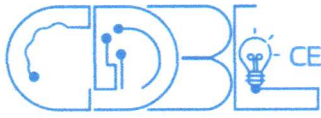
To ensure effective implementation of the MAGIS-360 framework, the university will provide continuous professional development for all faculty members. Training will focus on best practices for designing and facilitating asynchronous and synchronous learning experiences, as well as on leveraging the full capabilities of the Learning Management System (LMS), and the effective integration of digital and AI tools for teaching and learning.

V. Implementation and Effectivity

This framework shall be fully operational across all academic units of Ateneo de Zamboanga University, encompassing Basic Education through Professional Units, in June 2030.

All academic departments and faculty are expected to align their instructional delivery with the principles and components outlined in this framework by the specified date.

To facilitate the adoption process, each academic department or unit is encouraged to identify and empower an EdTech Champion. This individual will be trained by the Center for Digital and Blended Learning office, and will serve as a key resource person, assisting their colleagues in the effective adoption and integration of this blended learning framework according to their context.




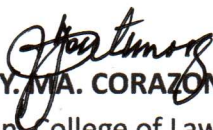
VI. Reviewed and Approved

Magis-360 has been reviewed and approved to guide the university's academic units in implementing a blended learning approach. The signatories below attest to its alignment with the university's educational mission and its strategic direction for providing flexible and resilient learning experiences.


Prepared by the Center for Digital and Blended Learning office.


Reviewed and approved by:


DR. JAYBEE D. BAZAN
Dean, School of Medicine


ATTY. MA. CORAZON J. MONTEMOR
Dean, College of Law


MR. JEFFREY O. JALANI
Vice President for Basic Education


FR. RENE C. TACASTACAS, S.J.
Vice President for Higher Education


FR. GUILLREY ANTHONY M. ANDAL S.J.
President, Ateneo de Zamboanga University